



Siting and Military Capabilities: DoD's Energy Siting Clearinghouse



Dave Belote
Energy Siting Clearinghouse
Office of the Secretary of Defense



America's Military Missions

We train...



test...



operate...



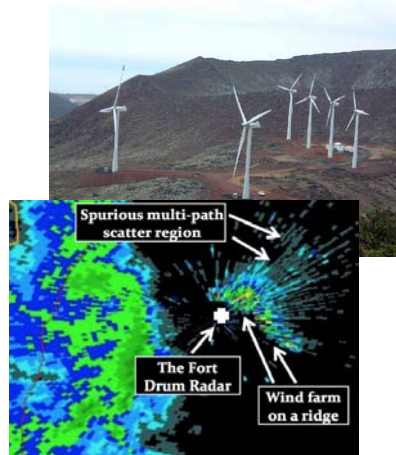
And defend.



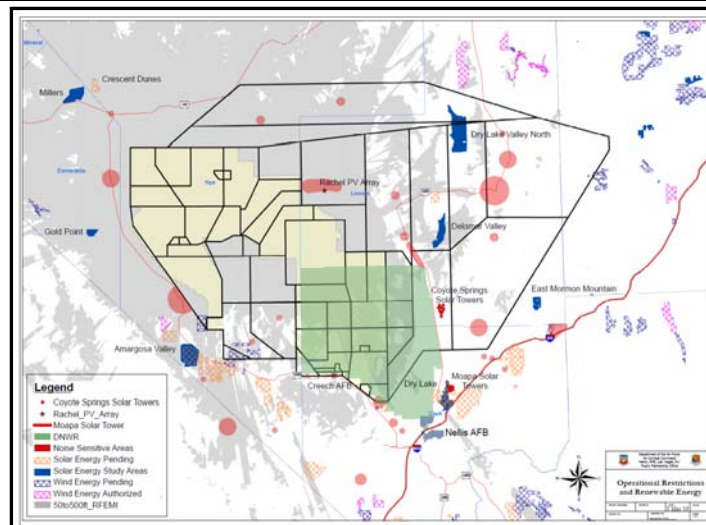


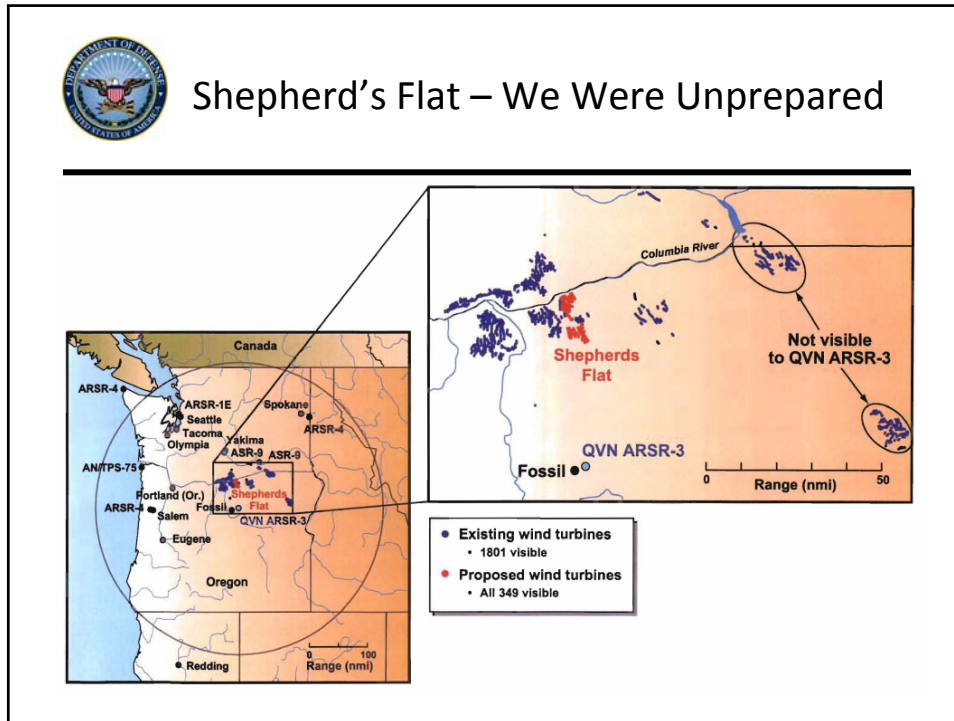
The Renewable Conundrum

- Unintended Consequences
 - Rapid development of renewable technologies
 - Rapidly changing military technology research & development
- Existing Policy and Processes
 - Not up to date with changing technologies
 - Land use decision-making authorities fragmented across all levels of government




Crescent Dunes to Coyote Springs: Congressional Push for Action





The Renewable Conundrum

- DoD's Response Inadequate
 - Case-by-case basis, steep learning curve, slow responses to requests for review
 - Uneven coordination among installations /Services
 - No single voice
- **RESULT:** Confusion, Delay, and Frustration for All Stakeholders – and extensive Congressional interest





The 2011 NDAA

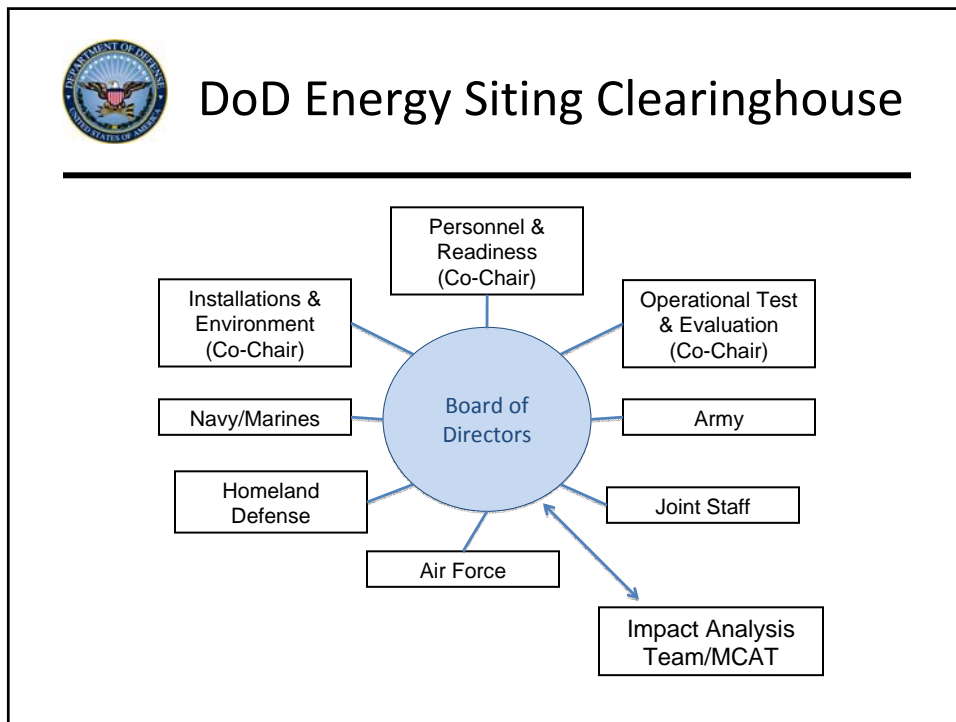
- National Defense Authorization Act (NDAA)
- Section 358 “Study Of Effects Of New Construction Of Obstructions On Military Installations And Operations”
- Designation Of Senior Official And Lead Organization
- **Focuses on Obstructions per the OE/AAA Process**



Key Elements of Section 358



- 180-day Preliminary Actions
- 270-day Comprehensive Strategy
- Hazard Assessment
 - Determination of unacceptable risk may only be delegated to:
 - The Deputy Secretary of Defense
 - The Under Secretary of Defense for Acquisition, Technology, & Logistics
 - The Principal Deputy Under Secretary of Defense for Acquisition, Technology, & Logistics
- Report to Congress
- Authority to accept funds for mitigation



DoD Energy Siting Clearinghouse

- Organization and Tools
 - Regional Mission Compatibility Review Teams
 - Mission Compatibility Awareness Tool (MCAT)
 - Operational Impact Assessment Tools

The image shows a screenshot of a software interface. On the left is a menu with options: Map, Navigation, Tools, Help, Street Map, Satellite Map, Topographic, Shaded Relief, World Navigation Charts, Bookmarks, Live Maps, Zoom In, Zoom Out, Full Extent, Re-center Map, Search, Overview Map, Identity, Locate, Extent, Chart, Draw, and Go To Database. The main area displays a topographic map with a red line indicating a profile. An inset window shows a graph titled "Elevation Profile" with a y-axis ranging from 0 to 2000 and an x-axis labeled "Distance along profile (meters)".



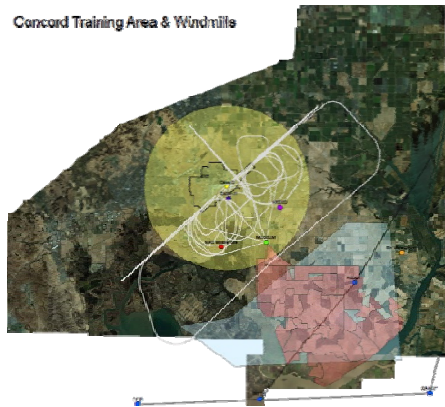
DoD Energy Siting Clearinghouse

- Concept of Operations
 - Outreach and **Early Consultation**
 - What the Clearinghouse Needs to Know
- Concept of Operations
 - Matrix of Data and Communications
 - Parallel Multi-Service Review
 - **NOT a replacement for OE/AAA, NTIA, or NEPA**
 - **Applies to ALL renewables, not just wind**
 - **Applies on AND off our bases**



One Way Ahead

Concord Training Area & Windmill



- **Travis AFB CRADA**
 - Cooperative Research and Development Agreement (CRADA)
 - Multiple Partners including Air Force, utility provider, wind developer, and consultants, plus multiple supporting organizations
 - Jointly funded studies of impacts and explored mitigations
 - Resulted in “re-tuning” of radar to mitigate coverage impacts



DoD Energy Siting Clearinghouse

- A Single DoD Voice
 - Timely, repeatable, and predictable process that promotes compatibility between energy independence and military capabilities: two key facets of national security
 - Most projects will be reviewed and cleared by Services in 30 – 45 days
 - Only projects with significant impacts or that need multi-Service coordination will receive full Clearinghouse attention



Dave Belote

Director, DoD Energy Siting Clearinghouse
(703) 697-7301, david.belote@osd.mil