



Learning to Look Upstream: Lessons in Embodied GHG Emissions

Session 2: Lifecycle Perspectives on Materials Production
presentation for ACCO Conference *Managing Waste*

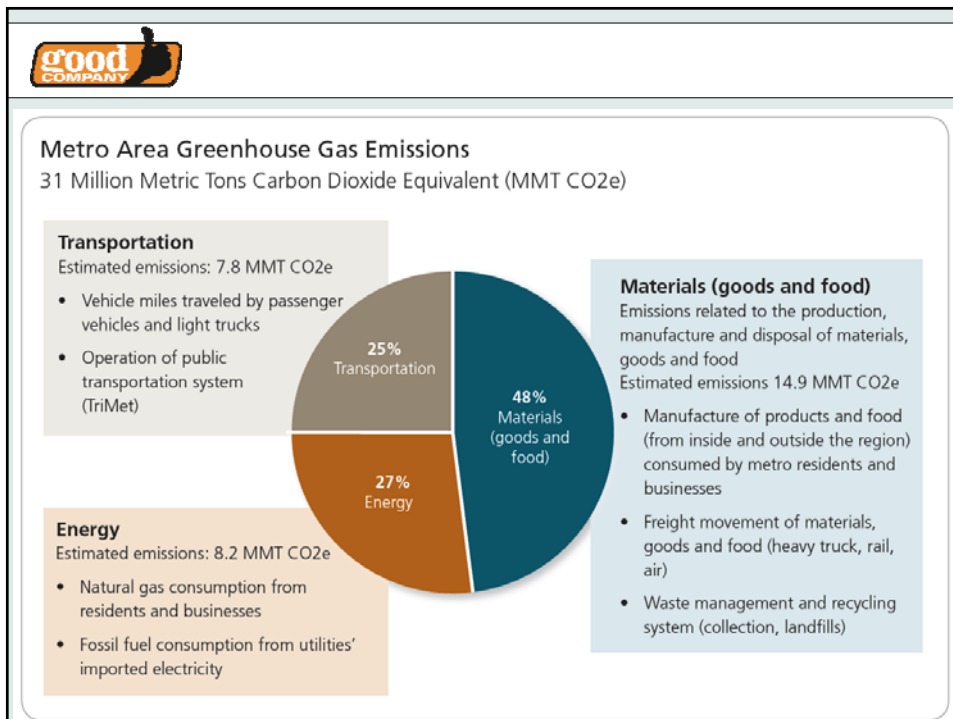
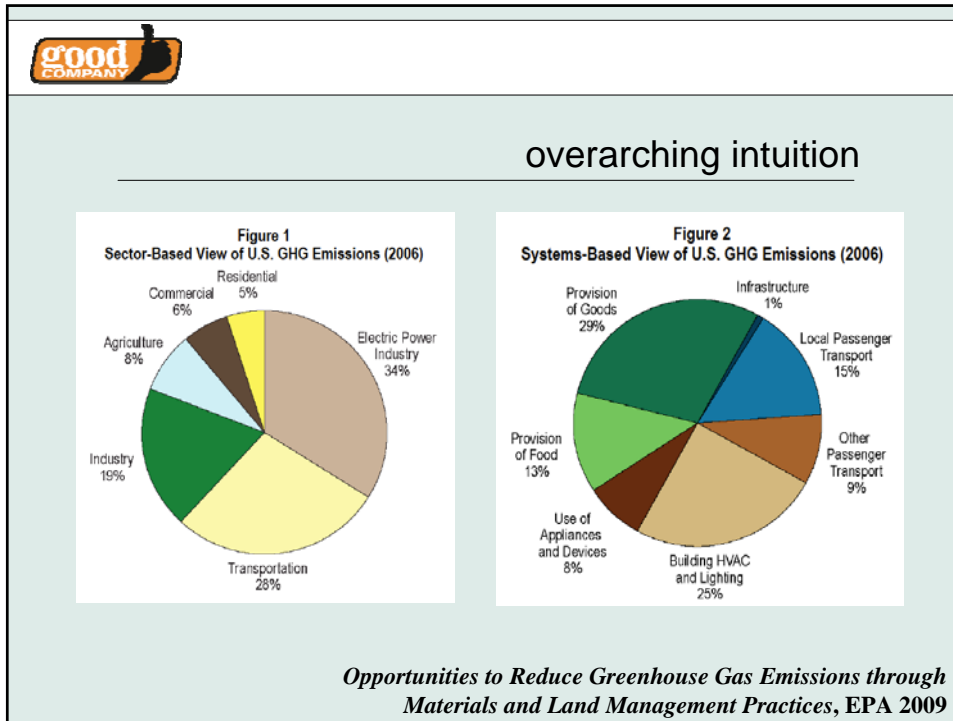
Portland, OR
October 19, 2010

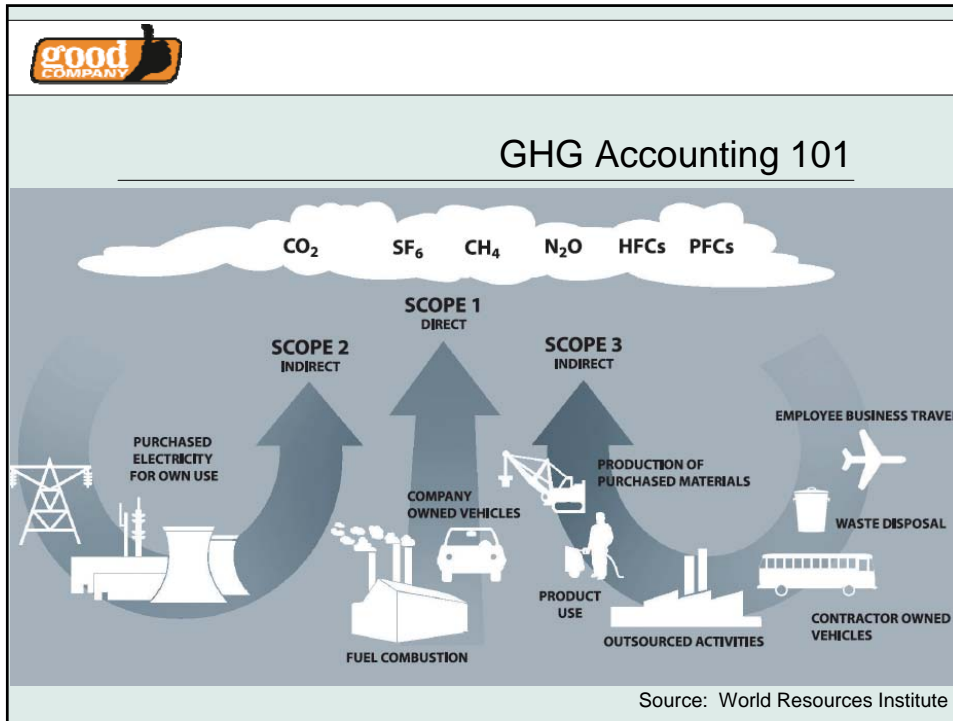
Joshua Skov
Principal
Good Company
Eugene, OR



overview

- starting points
 - overarching intuition: EPA sectors vs. systems
 - conventional carbon accounting
- public-domain examples at all scales
 - metropolitan area
 - a university, a university system
 - a renewable energy facility
 - music media
- lessons in priorities, communication and context





shifting accounting convention

- traditional focus: what's required
 - easiest emissions sources to measure
 - emissions sources that are clearly "ours"
 - what's under the streetlight
- emerging understanding: materials matter
 - supply chain work by largest firms
 - shift in focus by CDP
 - summary: more inventories with bigger boundaries
- new proposed language and ideas
 - ownership vs. control
 - *owned emissions vs. shared emissions*



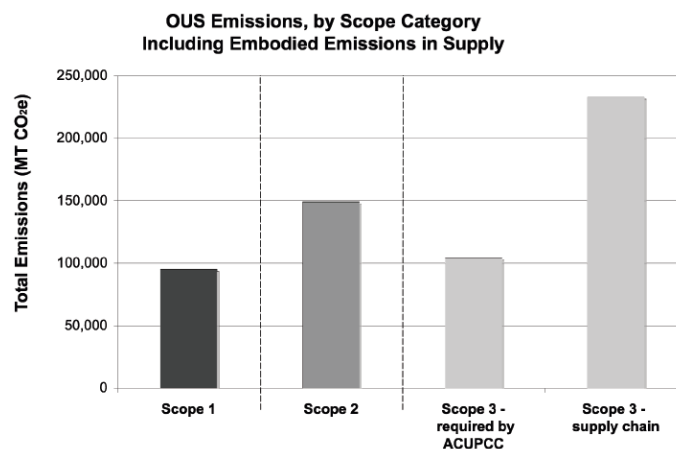
a university system

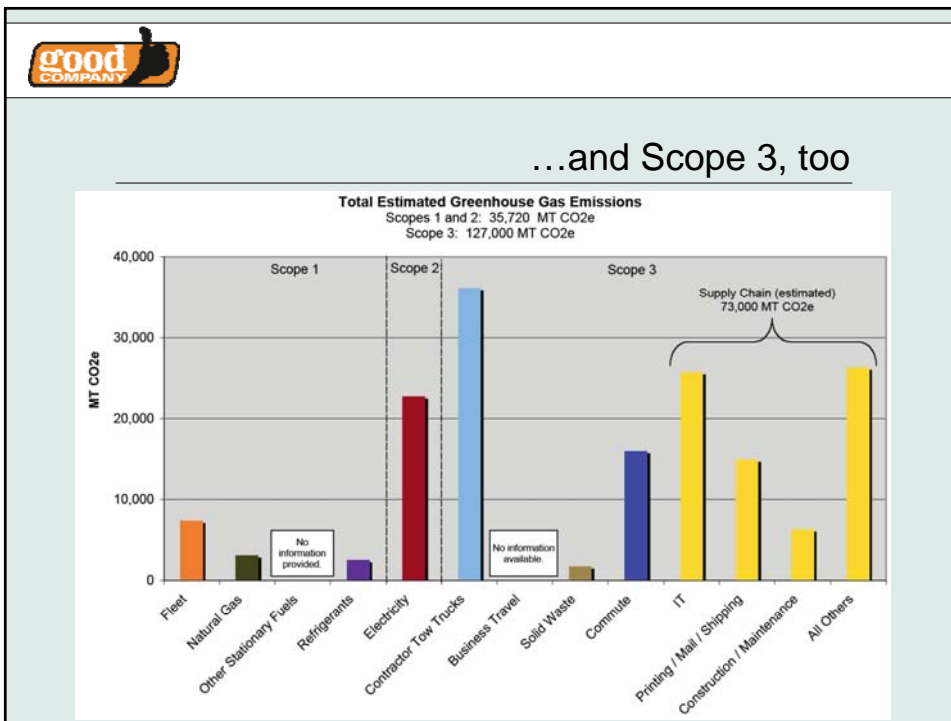
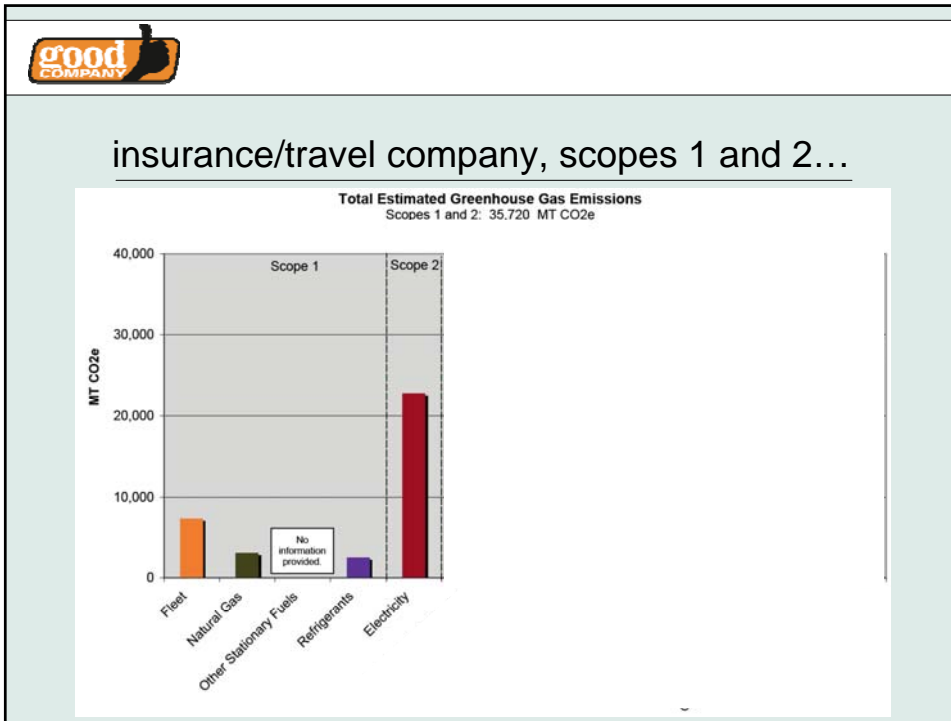
- Oregon University System
 - seven public universities
 - about 20 million gross square feet of buildings
 - interested in climate action
- context in higher education: ACUPCC
 - co-signatories, and a community of like-minded peers
 - “guidance” for higher ed inventories – too low a common denominator?



a university system

Figure 1: Embodied emissions in the OUS supply chain versus other GHG inventory emissions sources.

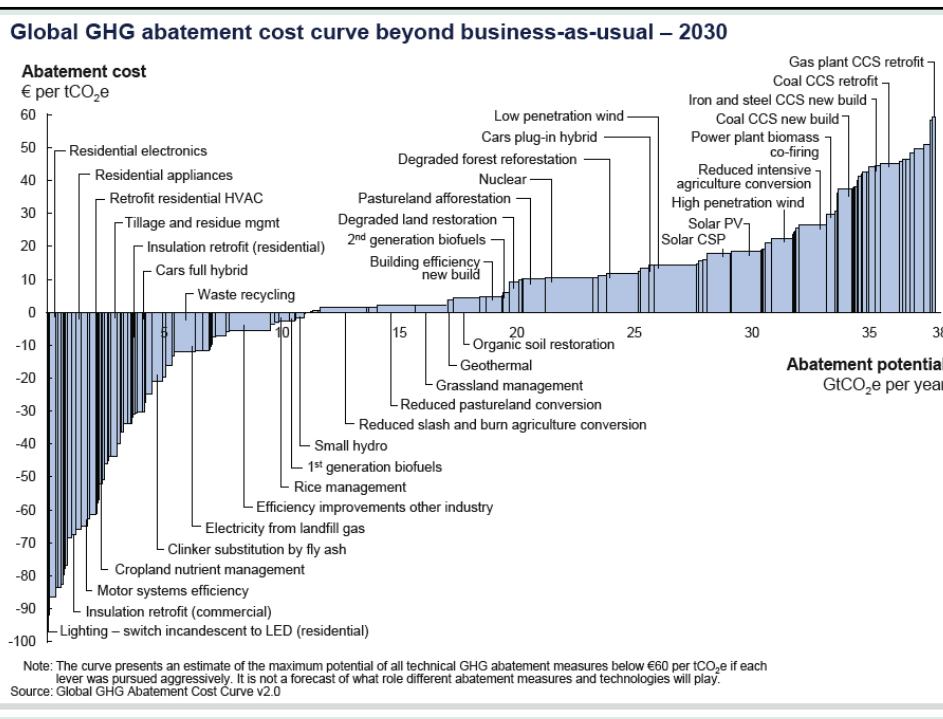






supporting examples: materials matter

- food (Weber and Matthews)
- LCA of a detached single-family home (ODEQ)
- music delivery systems (for Intel, Microsoft)
- overlapping insights: production matters in all cases, even if in slightly different ways





Thank you!

Joshua Skov
joshua.skov@goodcompany.com
(541) 341-GOOD (4663), ext. 211

www.goodcompany.com



The CO2 Impacts of Different Music Delivery Methods

