

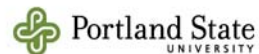
Portland State University

Materials Management in 2010



Noelle Studer-Spevak, Campus Sustainability Coordinator,
studern@pdx.edu, 503.725.8945

www.ecowiki.pdx.edu
www.pdx.edu/sustainability/campus-sustainability-office



About our University

- Urban Research University
- 50 acres in south downtown Portland
- 52 buildings; 3.5 M gsf.
- Nearly 30,000 students; 94% commute
- Average student age: 27
- 2200 employees

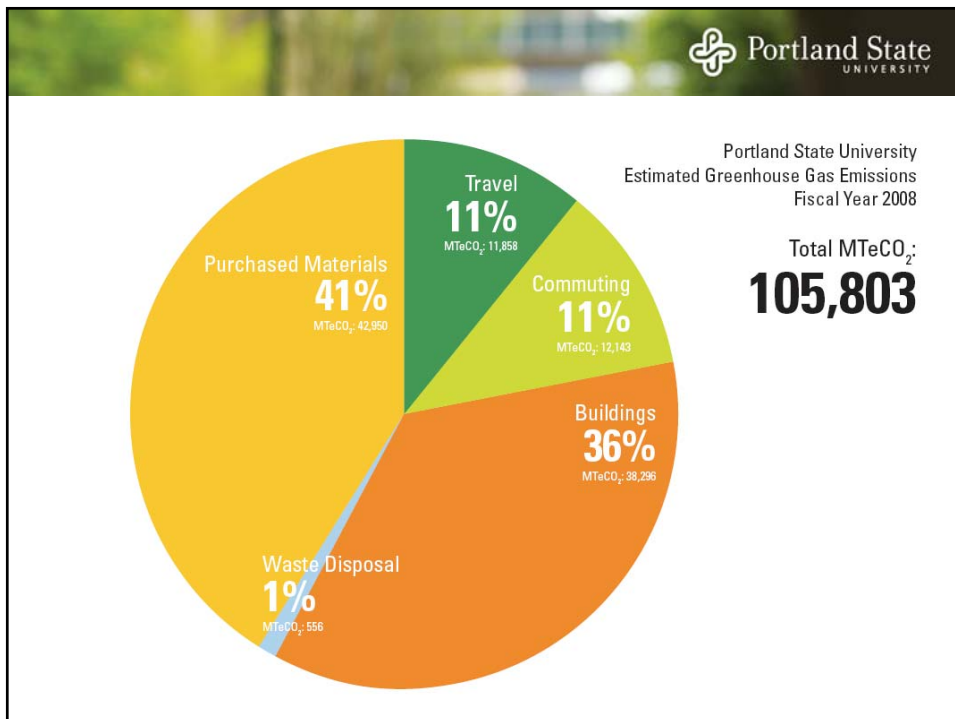


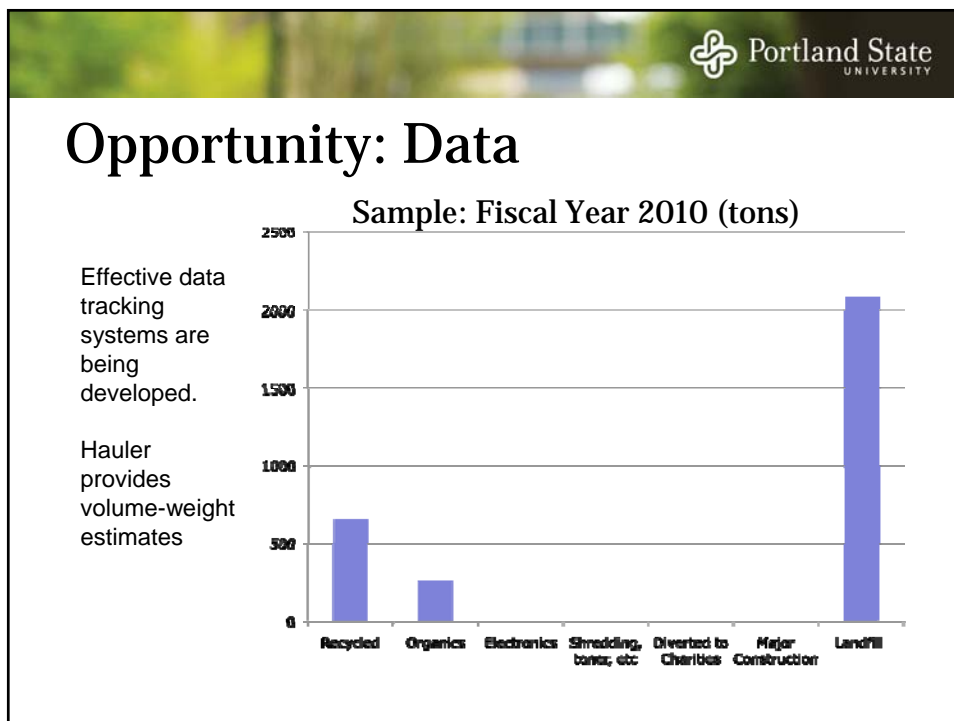
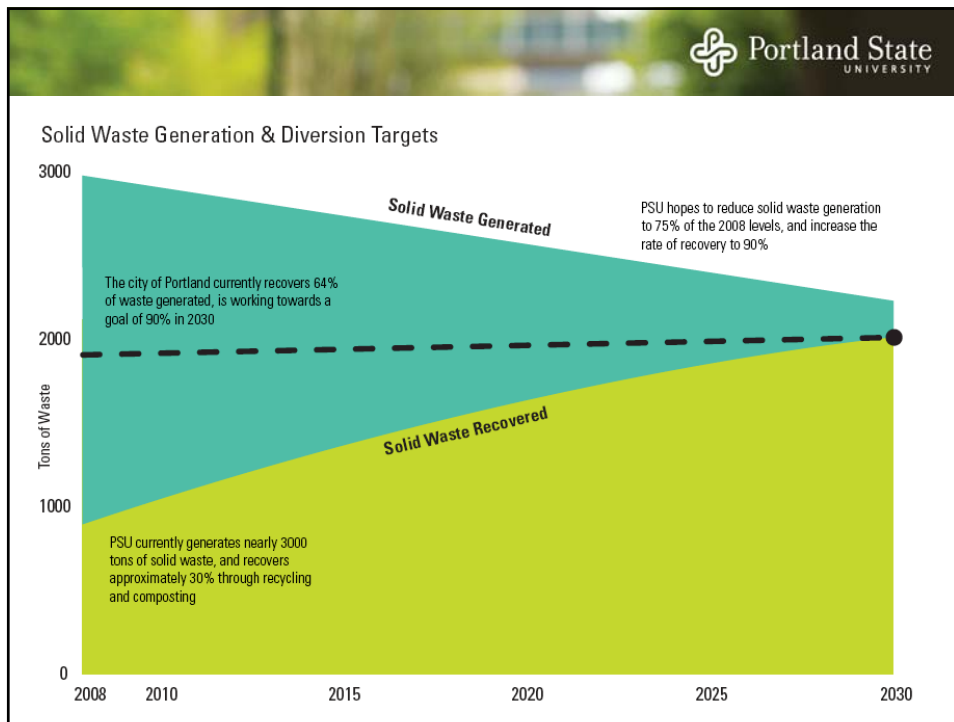


Why materials management?

- Students began recycling in the 70's
- New effort reborn in late 90's
- Innovative Resource Management contract established in 2004.
- City of Portland Commercial Recycling Requirement, 75% by 2015 City Code 17.102 part 5.2 business standards
- American College & University Presidents Climate Commitment (ACUPCC)







Other Opportunities

Infrastructure

Investing in uniform bin and signage system across campus.

Personnel

How to fund staffing for adequate pickups in housing, academic buildings, and leased spaces?

Strengthening Collaborative Partnerships

- Increase diversion during move-in/move-out and the in-between times with Residence Life
- Enhance organics diversion for catered events with our food service provider
- Stronger purchasing language



EcoDistrict Pilot

Partnering with faculty and a series of capstone courses on innovative methods to drive down material waste on a single block with multiple commercial, public, and academic tenants.

Materials Management Working Group forming this fall.

