

## Prior Plans

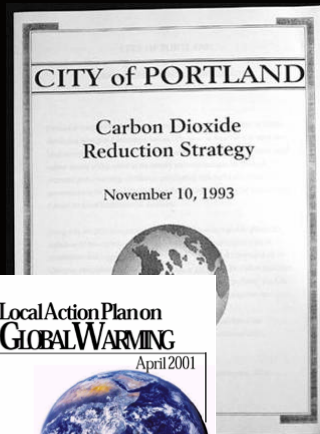
First plan in 1993.

Joint City/County effort since 2001.

Previous Goal: 10% below 1990 levels by 2010.



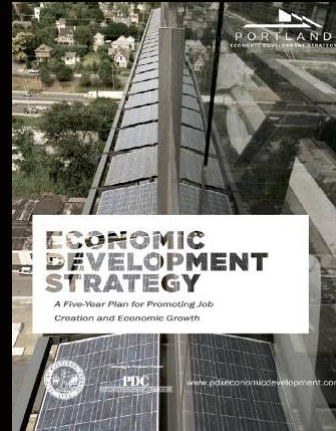
City of Portland Bureau of  
Planning and Sustainability  
Sam Adams, Mayor | Susan Anderson, Director



# Success is not just about carbon

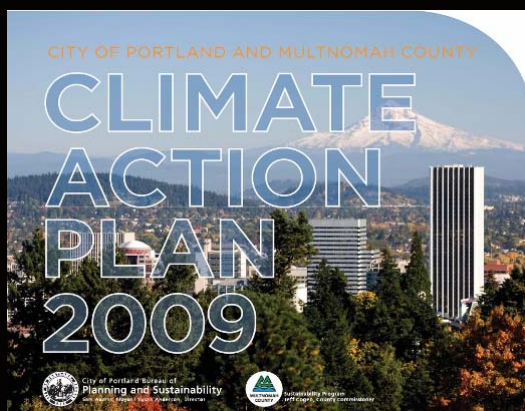
The Climate Action Plan aligns with other City of Portland efforts.

- PDC - Economic Development Strategy
- BES – Grey to Green
- PBOT – Bicycle & Streetcar Master Plans
- BPS – Portland Plan
- City's work to advance social equity and diversity



City of Portland Bureau of  
**Planning and Sustainability**  
 Sam Adams, Mayor | Susan Anderson, Director

# Climate Action Plan



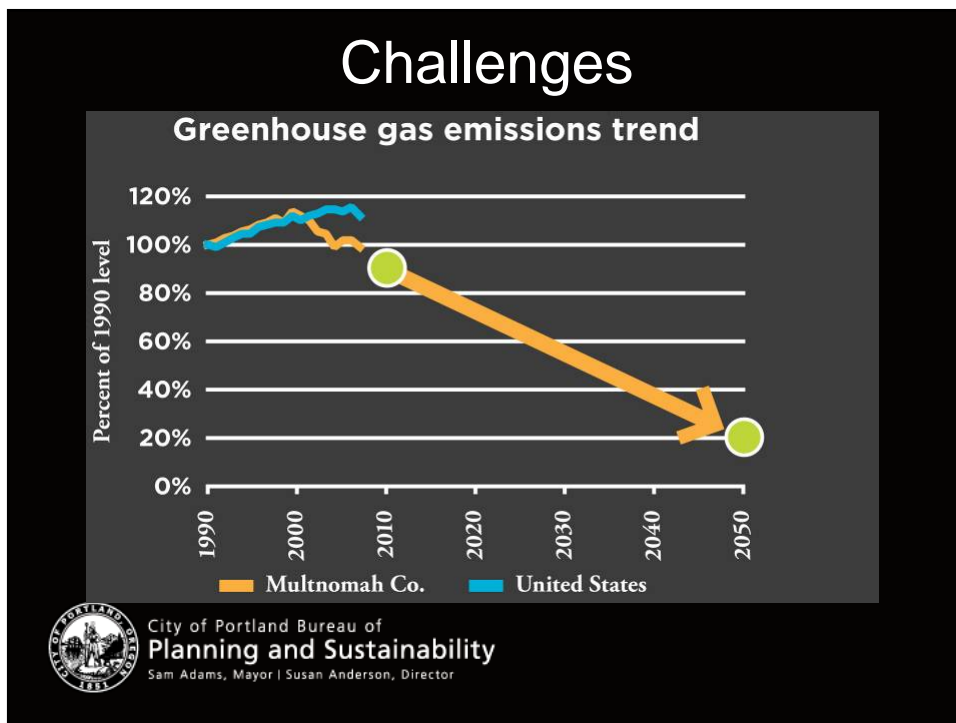
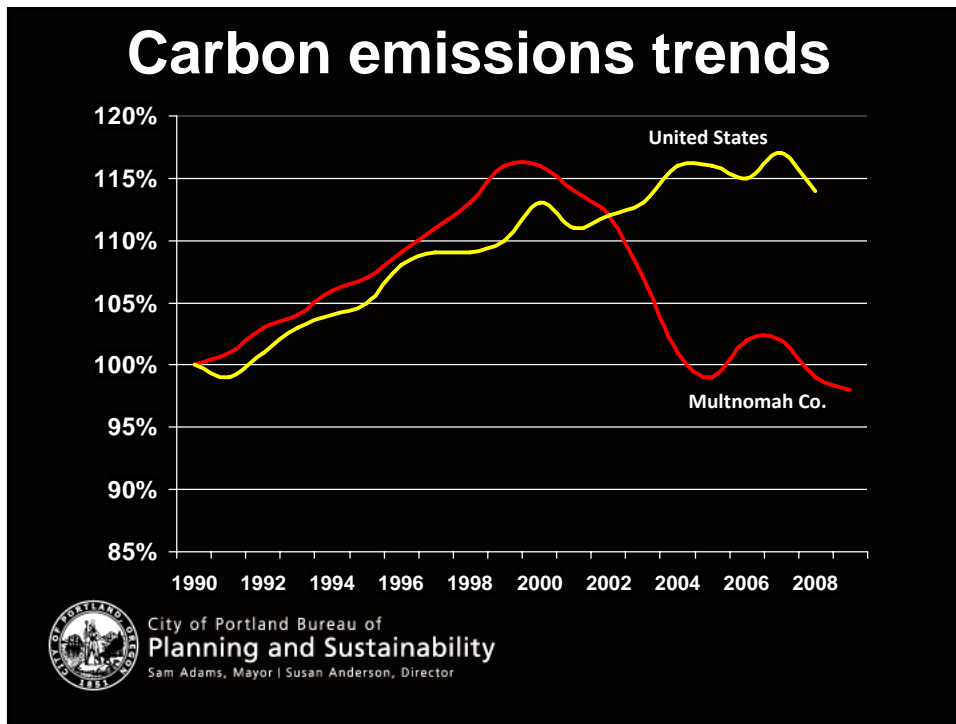
City of Portland Bureau of  
**Planning and Sustainability**  
 Sam Adams, Mayor | Susan Anderson, Director

**2050 Goal:**  
 80% reduction in emissions

**2030 Interim goal:**  
 40% reduction

2030 Objectives

2012 Actions



## Eight Action Areas

- |   |                                      |
|---|--------------------------------------|
| <b>1</b> BUILDINGS AND ENERGY               | <b>5</b> FOOD AND AGRICULTURE        |
| <b>2</b> URBAN FORM AND MOBILITY            | <b>6</b> COMMUNITY ENGAGEMENT        |
| <b>3</b> CONSUMPTION AND SOLID WASTE        | <b>7</b> CLIMATE CHANGE PREPARATION  |
| <b>4</b> URBAN FORESTRY AND NATURAL SYSTEMS | <b>8</b> LOCAL GOVERNMENT OPERATIONS |



City of Portland Bureau of  
**Planning and Sustainability**  
Sam Adams, Mayor | Susan Anderson, Director

### **3** CONSUMPTION AND SOLID WASTE

- Comprehensive residential & commercial recycling programs
- Citywide recycling rate = 67%
- Today's topic: capture of food scraps



City of Portland Bureau of  
**Planning and Sustainability**  
Sam Adams, Mayor | Susan Anderson, Director

## Wasted Food = Methane

- 21x more potent than CO<sub>2</sub>
- 22% of methane produced comes from landfills
- Provides potential energy source



City of Portland Bureau of  
**Planning and Sustainability**  
Sam Adams, Mayor | Susan Anderson, Director

## Regional Program

- Partnership with Metro
- Food waste management hierarchy:
  - Donation – feed the hungry
  - Diversion to animal feed
  - Composting
  - Energy recovery?



City of Portland Bureau of  
**Planning and Sustainability**  
Sam Adams, Mayor | Susan Anderson, Director

## Residential Food Scraps Collection

- Residential curbside food scraps collection now underway
- Citywide roll-out fall 2011



City of Portland Bureau of  
**Planning and Sustainability**  
Sam Adams, Mayor | Susan Anderson, Director

## Getting Down to Business

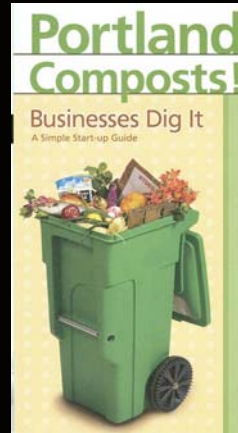
- 75% of solid waste is from commercial sector
- Close to 29% of commercial solid waste is compostable food and food soiled paper



City of Portland Bureau of  
**Planning and Sustainability**  
Sam Adams, Mayor | Susan Anderson, Director

# Portland Composts!

- Target: Largest generators
- Voluntary participation for both haulers and generators
- City focus on outreach and training for businesses



City of Portland Bureau of  
**Planning and Sustainability**  
Sam Adams, Mayor | Susan Anderson, Director



## Status

- 680 businesses
- Approx. 10,000 tons/yr, 20K for the region
- City Council mandate in 2008
- Transfer station at capacity



City of Portland Bureau of  
**Planning and Sustainability**  
Sam Adams, Mayor | Susan Anderson, Director

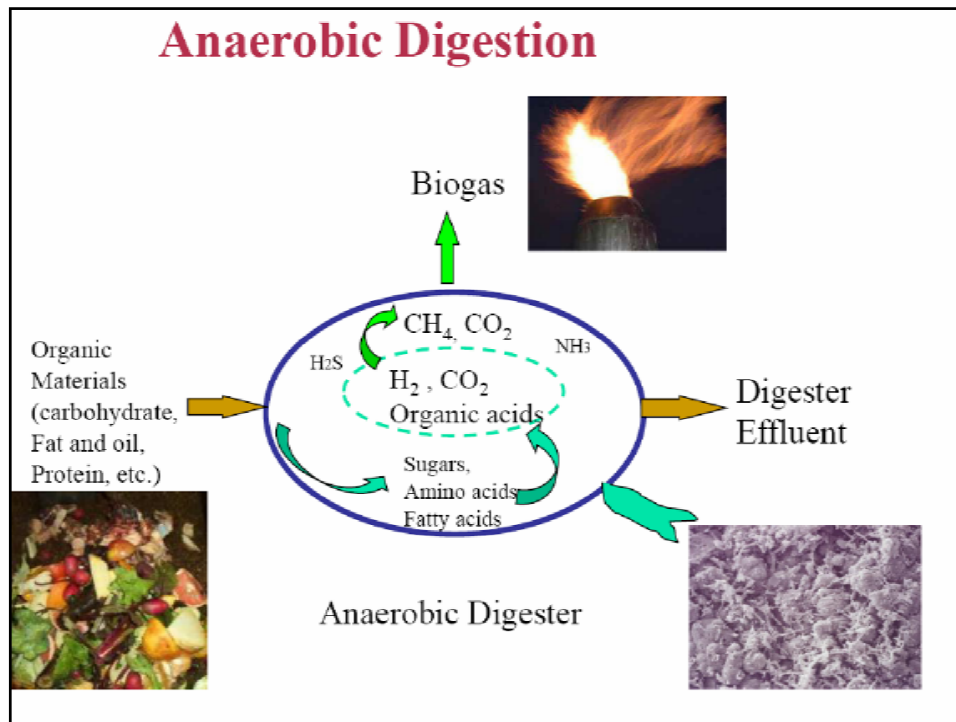
## Anaerobic Digestion in Oregon

- Energy Trust feedstock study
- Co-digestion in waste water treatment plants
- BioEnergy Park in Willamette Valley
- Proposed digester in Portland



City of Portland Bureau of  
**Planning and Sustainability**  
Sam Adams, Mayor | Susan Anderson, Director



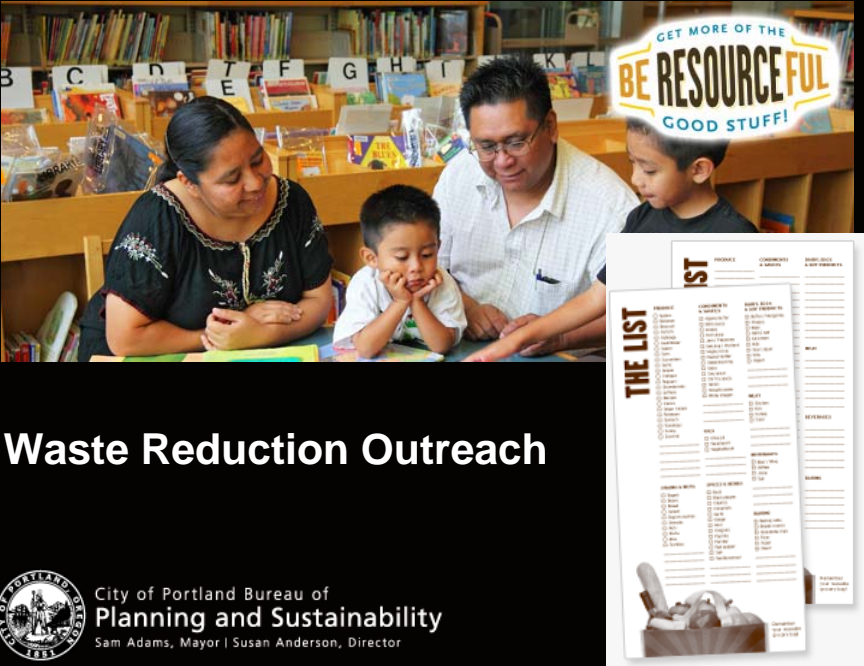


## On the Horizon in Portland


- Event and public collection
- Mandated commercial participation
- Residential curbside collection
- Expanded composting capacity
- Privately owned anaerobic digestion facility



City of Portland Bureau of  
**Planning and Sustainability**  
 Sam Adams, Mayor | Susan Anderson, Director



**Waste Reduction Outreach**



City of Portland Bureau of  
**Planning and Sustainability**  
Sam Adams, Mayor | Susan Anderson, Director

## Contact Information

Bruce Walker  
Solid Waste and Recycling Program  
Bureau of Planning and Sustainability  
(503) 823-7772  
[bruce.walker@portlandoregon.gov](mailto:bruce.walker@portlandoregon.gov)



City of Portland Bureau of  
**Planning and Sustainability**  
Sam Adams, Mayor | Susan Anderson, Director